



Toll Free: 1-800-579-8088 Web: www.zinko.com

MODEL

FRL-212N-1

Air Unit 1/4" Port

FILTER-REGULATOR

1. Installation instructions:

1. The assembly of all calibration shall meet the maximum flow requirements.
2. Maximum pressures of 9.9kgf / cm.
3. Direction –air flow in the triangle “►” on the primary unit.
4. Position –water discharge the triangle “▲” downward.
5. Site –as close to the unit to be protected as possible.
6. Place –free of direct sun light, hot areas and hazardous chemicals.
7. The water drainage shall be deployed beneath the water discharge for outlet.

2. Regulation:

1. Regulation of pressure
 - a. Pull up knob (#22) and turn it clockwise to increase the pressure, and counterclockwise to decrease the pressure.
 - b. Regulate the pressure to the desired level and push down the knob (#22) to lock it up.
2. Drainage
 - a. If there is no pneumatic pressure, the water will discharge.
 - b. If there is pneumatic pressure, turn the valve (#09) to “▼” upward so that the water will discharge.
 - c. When the water level exceeds the maximum limit, drain to keep optimal dehumidification.

3. Maintenance:

1. Shut off the air supply to release the air.
2. Turn the bowl (#02) counterclockwise and then turn the bowl baffle (drawing #04) counterclockwise to remove the filter element (#05)
3. The filter that makes the air flow outward is available for repeated use.
4. Clean the transparent P.C. cup with a clean, dry cloth. Do not use any chemical that could be hazardous to the P.C. material.

LUBRICATOR

1. Installation instructions:

1. Site-as close to the unit to be lubricated as possible.
2. Direct installation of filter-pressure regulator before the lubricator.
3. Add the lubricant into the oil cup.

2. Oil drop regulation:

1. Regulation of the needle valve: Turn it clockwise for less oil drop. Turn it counterclockwise for more oil drop.
2. Air flow regulation: After setting the needle valve. More air flow, more oil drop. Less air flow, less oil drop.

3. Oiling

1. Oiling is available without closing the air piping.
2. Turn off the fill plug (#37) counterclockwise.
3. Use ISO-VG32 or similar lubricants.
4. After adding oil to the maximum level, tighten the fill plug to have oil drop.
5. Do not remove the oil cup directly for oiling.

4. Maintenance

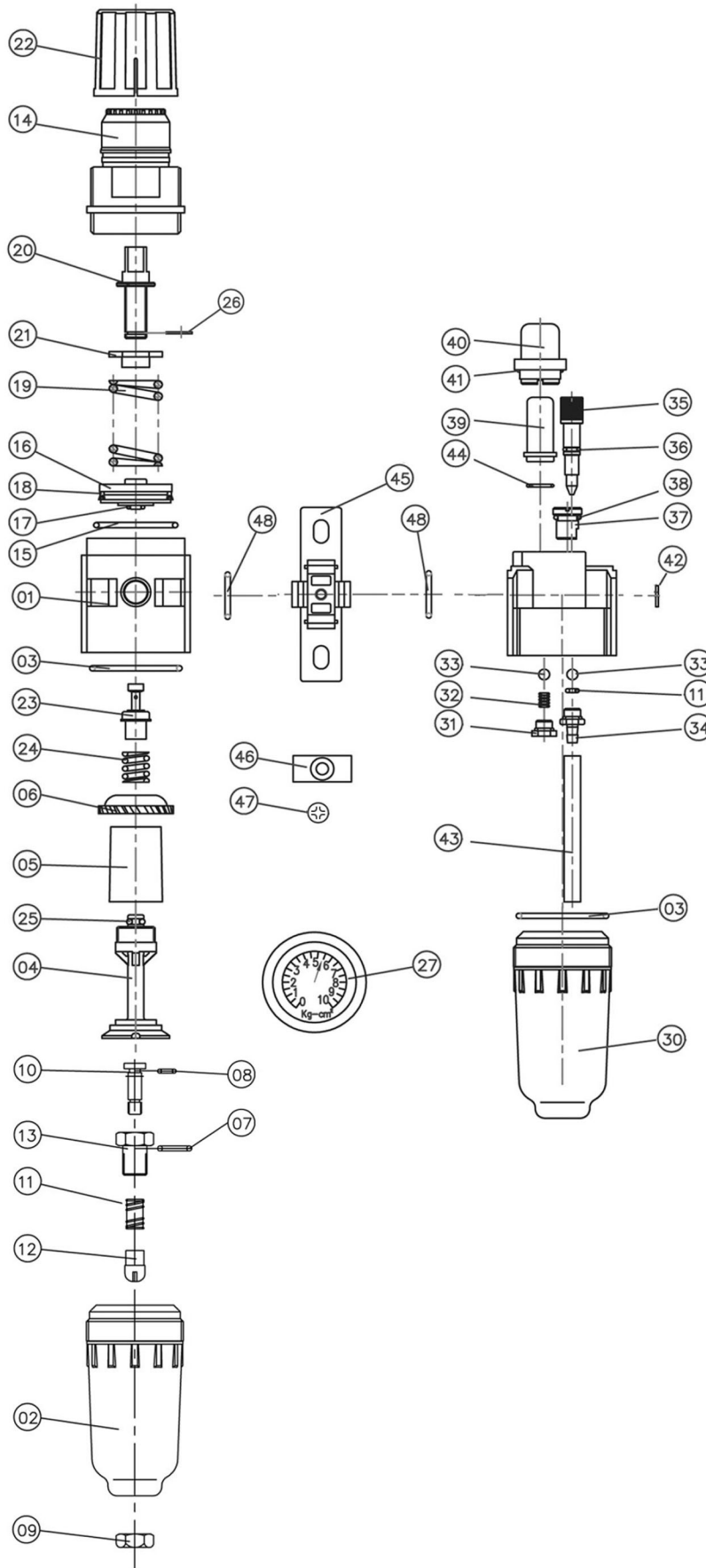
1. Shut off the air supply and discharge the air into the atmosphere.
2. Turn the bowl counterclockwise.
3. Clean the transparent P.C. cup with a clean, dry cloth. Do not use any chemical that would be hazardous to the P.C. material.
4. When assembling the kit again, please be sure that the Seal and the O-Ring are in the correct positions.

Notice:

1. The product in reference is applicable in industrial pressure systems rather than in premises of pressure and temperature exceeding the marked ones. This is not applicable in other fluids neither such as alcohol, gas, and gasoline. It is hazardous to the products by presenting leakage or flame. *Always use caution and in a ventilated area.*
2. The plastic cups and parts when exposed to paints, poor oil products, detergents and chemicals (such as resin, polyethylene, acetic acid, etc) that would lead to aging in material and other defects.

Zinko Hydraulic Jack

Model: **FRL-212N-1**



No.	Description
1	Body A
2	Bowl A
3	O-Ring
4	Bowl Baffle
5	Filter Element
6	Interceptor
7	O-Ring
8	O-Ring
9	Nut A
10	Piston A
11	Spring A
12	Piston B
13	Nut B
14	Dome
15	O-Ring
16	Piston C
17	O-Ring
18	V-Ring
19	Spring B
20	Adjusting Screw A
21	Nut C
22	Knob
23	Valve
24	Spring C
25	O-Ring
26	O-Ring
27	Gauge
28	Nut D
29	Body B
30	Bowl B
31	Nut E
32	Spring D
33	Ball
34	Plug
35	Adjusting Screw B
36	O-Ring
37	Fill Plug
38	O-Ring
39	Inside Cup
40	Outside Cup
41	O-Ring
42	Adjusting Ring
43	Tube
44	O-Ring
45	Joint A
46	Joint B
47	Screw
48	O-Ring

Recommend Replacement Parts	
95605	Filter Element, #5
95627	Gauge (240 psi), #27
95630	Lub. Bowl, #30
95651	Kit, Filter Bowl (#2, 7, 8, 9, 10, 11, 12, 13)
95652	Kit, Drainage (#7, 8, 9, 10, 11, 12, 13)